

Kit SNDTRIAL joint assembling and installation notes

1. GENERALS

The SNDTRIAL joint is designed to allow the installation of the compatible detector in placed where are required:

- Vertical/horizontal inclination adjustment.
- 90° positioning.
- Internal cables routing.
- High robustness for great stability over time.

2. GENERAL NOTES

Summary of joint installation types in relation to the fixing height and the used detector.

2.1 Installations options with 6° tilt bracket supplied with detector

- Direct fixing at 1m TRIAL wired version and 485 (without joint and without 6° bracket).
- Fixing from 1m to 1.5 m with 6° bracket TRIALH and TRIAL485H (without joint).
- Corner fixing at 1m TRIAL wired version and 485 (without joint and without 6° bracket).
- Corner fixing from 1m to 1.5 m with 6° bracket TRIALH and TRIAL485H (without joint).
- Direct fixing at 2.1m with 6° bracket for TRIAL wired version and 485 (without joint).
- Corner fixing at 2.1m with 6° bracket for TRIAL wired version and 485 (without joint).

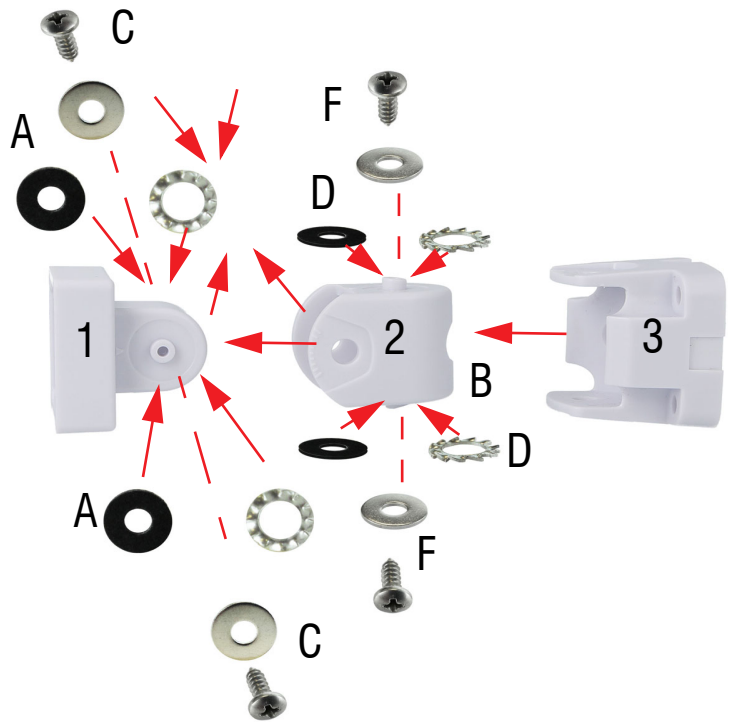
2.2 Installations options with SNDTRIAL joint

- Joint fixing at any height only for TRIAL wired version and 485 with rotation up to +/-45° and pan/tilt up to +/-45° (it is required a joint for height from 2.1m and up to 3m).
- 90° joint fixing for TRIAL wired version and 485 or TRIALV and TRIAL485V (vertical curtain lens) at any height up to 3m 90° rotation (right or left depending on bracket mounting) and pan/tilt up to +/-45°.

3. JOINT ASSEMBLY

Follow the descriptions indicated by the letters from A to F.

- A** Place on both sides of the rubber or metal washer. Keep it to avoid the fall.
- B** Engage the central block 2 on 1 keeping in the middle the two washers.
- C** Place outside the metal washer and secure it with the self-tapping screw.
- D** Place on both sides of the rubber or metal washer or keeping it because it does not fall.
- E** Engage the block 3 on central 2 by keeping in the middle the two washers.
- F** Place the washer on the outside metal and secure it with the self-tapping screw.



Notes: in the mounting kit are also provided four self-locking metal washers, as an alternative to rubber washers, if is necessary to block stronger the joint.

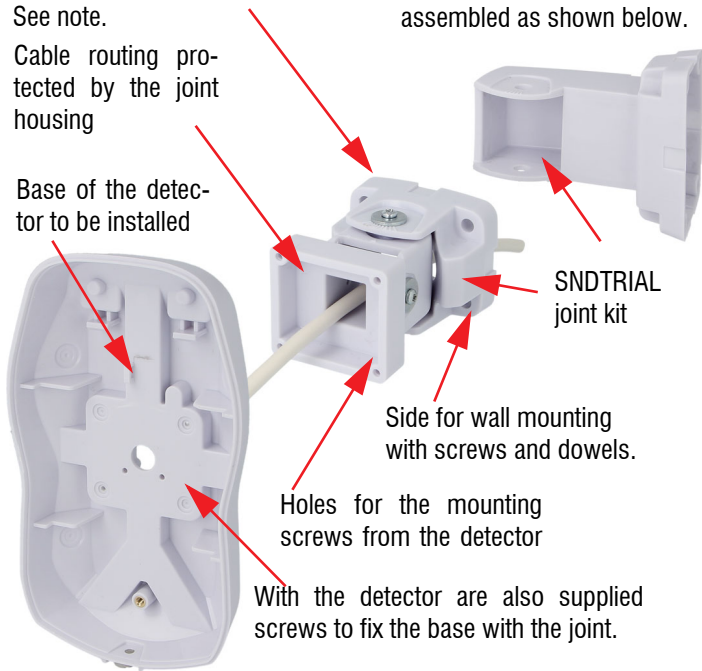
View of the assembled joint with the detail of the cable routing.

The arrow indicates the special rubber washers for the clutch function. See note.

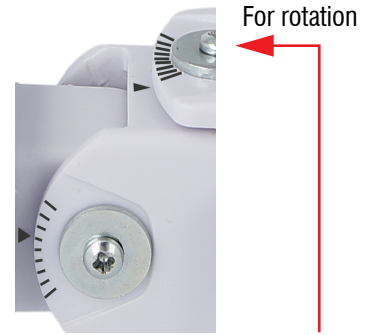
Cable routing protected by the joint housing

Base of the detector to be installed

Bracket for 90° fixing. To be assembled to the right or to the left by replacing it to the end piece of the joint assembled as shown below.



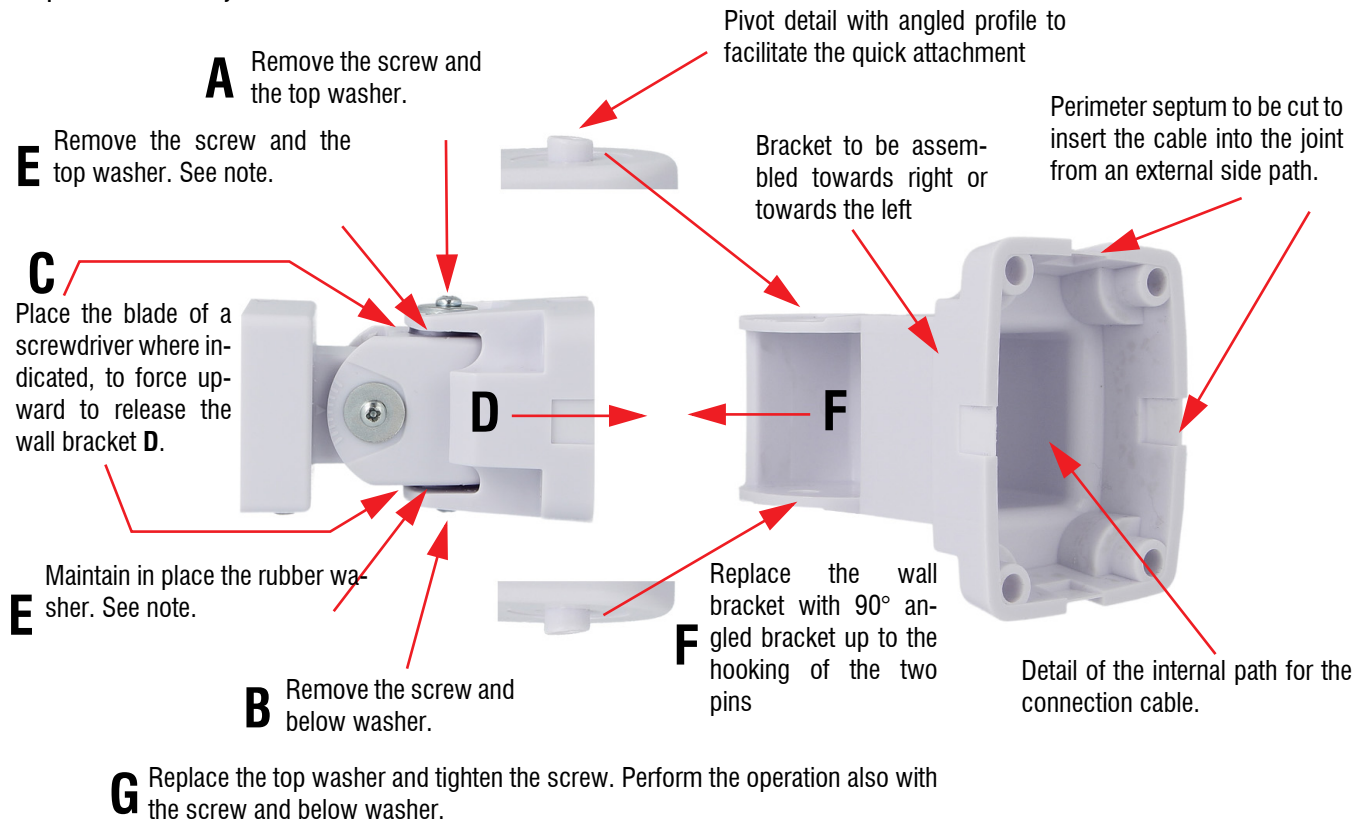
For pan



Each bar of the joint correspond to 10° for pan and tilt:

- at 1m for TRIAL the Pan&Tilt should be kept on the middle bar.
 - at 1m for TRIALH the Pan&Tilt should be inclined downward by about 1½ bar respect to the central.
 - should be inclined about 1/2 bar downwards compared to the central one.
 - at 3m the TRIAL-TRIALV pan&tilt should be inclined about a bar downwards compared to the central one.
- TRIAL product is also referred to the version with 485 serial interface.

Sequences of the joint assembled with 90° bracket.



Note: the four screws of the joint will have to be attached only at the end of the orientation phase of the detector to obtain the best protection request. During this phase the four rubber washers ensure the correct friction in the motion detection. In the mounting kit are also provided four self-locking metal washers, as an alternative to rubber washers, if is necessary to block stronger the joint.