



# DOMOTIME SRL

Via Monico 9, 25017 Lonato del Garda (BS) – ITALY -

Tel.: +39 030 9913901

Fax: +39 030 2070611

Email: [info@domotime.com](mailto:info@domotime.com)

Website: [www.domotime.com](http://www.domotime.com)

Rev. 2019-06

## SCHEMA TECNICA PRODOTTO TECHNICAL CARD

|   |   |   |
|---|---|---|
| <b>Codice prodotto:</b><br><b>Product code:</b>             | <b>CIN123001</b>  | <b>Cremagliera in acciaio inossidabile per cancelli scorrevoli</b><br><b>Stainless steel rack for sliding gates</b>     |
| <b>Materiale:</b><br><b>Material:</b>                       | <i>Acciaio INOX AISI 304 (#304)</i><br><i>Stainless steel AISI 304 (#304)</i> | <b>Modulo:</b> M4<br><b>Module:</b> M4  |
| <b>Peso:</b><br><b>Weight:</b>                              | 2,8 Kg/m<br>2,8 Kg/m  | <b>Finitura:</b> Sbavato – Deburred<br><b>Finishing:</b> UNI ISO 2081 Fe/Zn 8   |
| <b>Dimensioni:</b><br><b>Dimensions:</b>                    | 12 x 30 x 1005 mm<br>12 x 30 x 1005 mm  | <b>Asole di fissaggio:</b> 3 - Nottolini inclusi (3 set/m)<br><b>Fixing holes:</b> 3 - Fixing bolts included (3 sets/m) |
| <b>Peso max sopportato:</b><br><b>Max loading capacity:</b> | 2000 kg<br>2000 kg  | <b>Imballo:</b> Confezione contenente 4 pezzi<br><b>Packaging:</b> Packaging made of 4 pieces                           |

### Composizione Chimica % Chemical composition

| Materiale<br>Material    | C      | Si   | Mn   | S       | Ti | P       | Cu | Cr        | Ni       |
|--------------------------|--------|------|------|---------|----|---------|----|-----------|----------|
| Standard %<br>Standard % | ≤ 0,07 | ≤ 1  | ≤ 2  | ≤ 0,015 |    | ≤ 0,045 |    | 17 - 19,5 | 8 - 10,5 |
| % Effettiva<br>Actual %  | 0,07   | 1,00 | 1,48 | 0,015   |    | 0,037   |    | 17,2      | 8,01     |

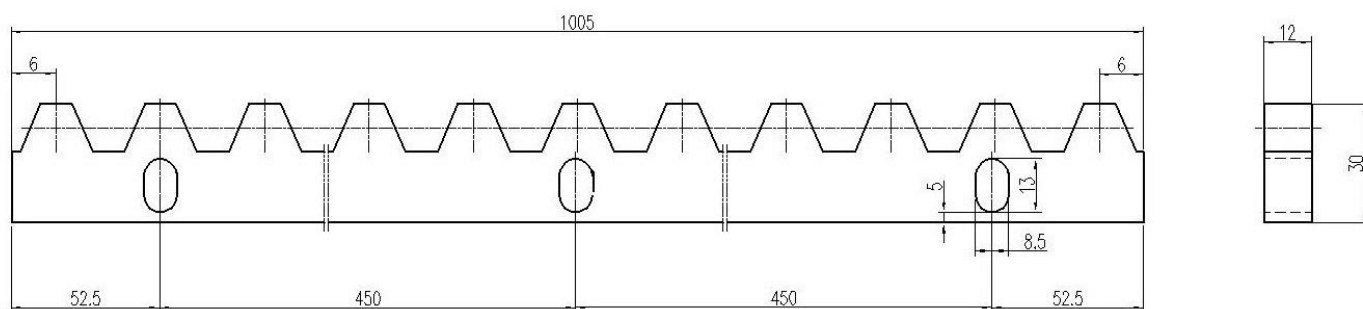
**Domotime Srl** dichiara che il prodotto CIN123001 è conforme ai requisiti essenziali fissati dalle Direttive Europee.

**Domotime Srl** declares that the product CIN123001 complies with European directives.

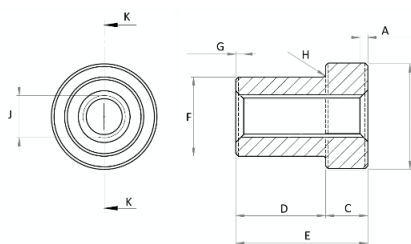




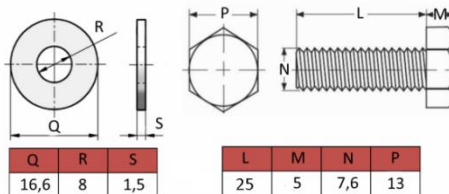
## Disegno tecnico Technical drawing



## Nottolini INOX inclusi: CINVRN (3 set/m) Stainless steel fixing bolts included: CINVRN (3 sets/m)



| A       | B   | C | D  | E  | F   | G       | H    | J  | K   |
|---------|-----|---|----|----|-----|---------|------|----|-----|
| 1,5x45° | Ø20 | 8 | 17 | 25 | Ø15 | 1,5x45° | R0,5 | M8 | Ø20 |



| Q    | R | S   |
|------|---|-----|
| 16,6 | 8 | 1,5 |

| L  | M | N   | P  |
|----|---|-----|----|
| 25 | 5 | 7,6 | 13 |