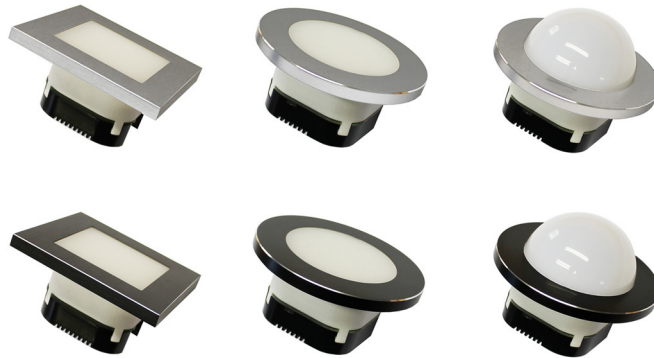


KNX-LED4-xxx

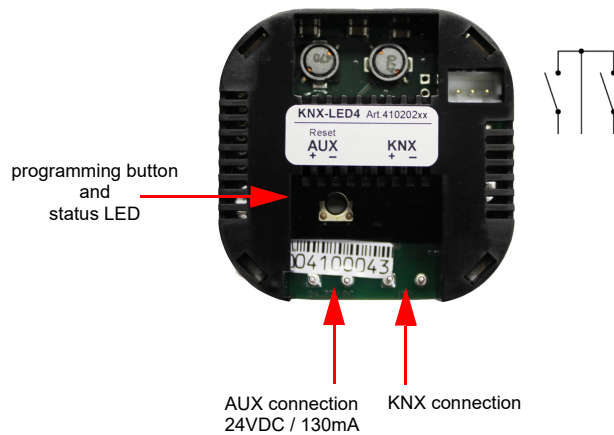
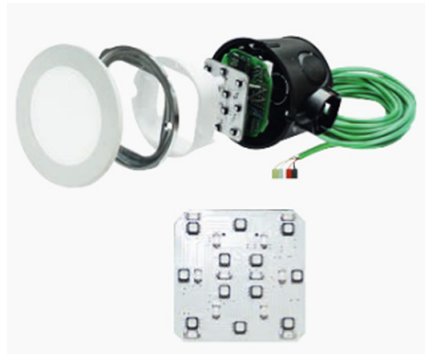
Article no. 410402xx

The KNX-LED2L is a luminaire for mounting in a 60/68mm flush-mounted box

- All functions are programmed and parameterized with the ETS
- up to 700lm / 7W illuminance
- dimmable
- Color temperature adjustable
- Leading control up to 10 base points
 e.g. Data type: 2-byte float
 lux level, CO2, temperature, humidity, ph level etc.
- Stairway functionality, buildin timer
- 2 binary contacts



Application: LEDx_v11.knxproj



Technical Data

RGB	selectable solid colors or 16 million adjustable colors
amber	independent of RGB
luminous flux	150 lm / dimmable
power	3 W
operating voltage KNX	bus voltage 21 .. 32 VDC
power consumption KNX	approx. 240 mW (at 24 VDC)
auxiliary voltage	24 .. 32 VDC / approx. 130 mA
ambient temperature	operating: 0 .. +50°C storage: 0 .. +80°C
ambient humidity	0 .. 95% r.H noncondensing
front	aluminum frame: Ø 84 mm, square 80 x 80 mm acrylic or half bulb height = 33 mm
plastic housing	50 x 50 mm , depth 32 mm
protection class	IP20