

TECHNICAL MANUAL



I8 - I8B

Addressable readers for
PROXI key

090010307



IMQ-SISTEMI DI SICUREZZA



FOREWORD

FOR INSTALLERS

Please follow carefully the specifications about electric and security systems realization further to the manufacturer's prescriptions indicated in the manual provided.

Provide the user the necessary indication for use and system's limitations, specifying that there exist precise specifications and different safety performance levels that should be proportioned to the user needs. Have the user read carefully the instructions provided in this document.

FOR USERS

Carefully check the system functionality at regular intervals making sure all enabling and disabling operations were made correctly.

Have skilled personnel make the periodic system's maintenance. Contact the installer to verify correct system operation in case its conditions have changed (e.g.: variations in the areas to protect due to extension, change of the access modes, etc.)

.....

This device has been designed, assembled and tested with the maximum care, adopting control procedures in accordance with the laws in force. The full correspondence to the functional characteristics is given exclusively when it is used for the purpose it was projected for, which is as follows:

Addressable readers for PROXI key

Any use other than the one mentioned above has not been forecast and therefore it is not possible to guarantee the correct functioning of the device. Similarly, any other use of this technical manual other than the one it has been compiled for - that is: to illustrate the devices technical features and operating mode - is expressly prohibited.

The manufacturing process is carefully controlled in order to prevent defaults and bad functioning. Nevertheless, an extremely low percentage of the components used is subjected to faults just as any other electronic or mechanic product. As this item is meant to protect both property and people, we invite the user to proportion the level of protection that the system offers to the actual risk (also taking into account the possibility that the system was operated in a degraded manner because of faults and the like), as well reminding that there are precise laws for the design and assemblage of the systems destined to these kind of applications.

The system's operator is hereby advised to see regularly to the periodic maintenance of the system, at least in accordance with the provisions of current legislation, as well as to carry out checks on the correct running of said system on as regular a basis as the risk involved requires, with particular reference to the control unit, sensors, sounders, dialler(s) and any other device connected. The user must let the installer know how well the system seems to be operating, based on the results of periodic checks, without delay.

Design, installation and servicing of systems which include this product, should be made by skilled staff with the necessary knowledge to operate in safe conditions in order to prevent accidents. These systems' installation must be made in accordance with the laws in force. Some equipment's inner parts are connected to electric main and therefore electrocution may occur if servicing was made before switching off the main and emergency power. Some products incorporate rechargeable or non rechargeable batteries as emergency power supply. Their wrong connection may damage the product, properties and the operator's safety (burst and fire).

DISPOSAL INSTRUCTIONS - USER INFORMATION



According to Directive 2012/19/EU on the Waste of Electric and Electronic Equipment (WEEE), it is here specified that this Electrical-Electromechanical Device started to be commercialized after 13th August 2005, and it shall be disposed of separately from ordinary waste products.

IT08020000001624



1. GENERALS

Addressable proximity reader for PROXI key mod. **I8** has been designed to allow direct connection to serial line of NET, Villeggio, ETR, TITANIA, PREGIO series and compatible control units; the ETR512, 256, 128 control units **must be equipped with firmware 2.0 or higher**, the ETR100 are compatible from the firmware 1.0 version.

The code detection of the M4 pin occurs without electrical contact because the learning process is carried out by electromagnetic field generated by **I8**; this makes key identification more secure and it successfully solved the vandalism situations that may damage the electrical contacts of the traditional inserter with contact. The correct operation to detect the pin with valid code is to move the plug to the middle of the inserter sensitive part (X-shaped) dimly lit to allow proper collimation. Once the key has been positioned, the sensitive part changes to full light. This inserter **cannot be used for the operations of pin code memorization**: for this purpose, a keypad compatible with the control unit must be used. The reader features four lights to display the control unit or system operation; in particular the "LED PROXI" light, at the bottom right, indicates the system status when the pin is in place for security reasons. Before using the reader, it is absolutely necessary to set the identification code for correct communication with the control unit: a switch at the opposite side to the terminal board can be used for this purpose. The **I8** reader features a dark grey housing, the **I8B** model a white one, the I8G model a light grey one; the I8S model is suitable for outdoor humid environments. The reader is equipped with open-collector output for applications which require transit function, see "SIGNALS AND CONNECTIONS" on page 5. The reader conformation allows the insertion into the flanges of the BTICINO-MAGIC series; for insertion into the flanges of other series, many adapters are provided, such as:


I8/TLGH for the TICINO LIGHT series.

I8/GWPB for the GEWISS PLAY BUS series.

I8/VIMP for the VIMAR PLANA series.

See the catalogue for other available models.

2. FEATURES

Mod:	I8	Programming:	Small sized selector on the right side of the reader for identification code programming and LED operation visualization.
Performance level:	III	Operating temperature:	-10 / +45°C certified by the manufacturer.
Power supply:	12V  from the RS485 line, (10 ÷ 15 V).	Dimensions:	W 21 x H42 x D46 mm
Power consumption:	30 mA	Weight:	20g.
Connections:	Connection terminal	Parts supplied:	Technical manual.
Outputs:	O.C. output 40mA max. usable according to control unit firmware.		

The I8 reader is an accessory of the compatible control units with CE label.

Note: a reader placed inside the recessed box must be protected against removal and connection cables tampering with proper tamper protection.

EU DECLARATION OF CONFORMITY

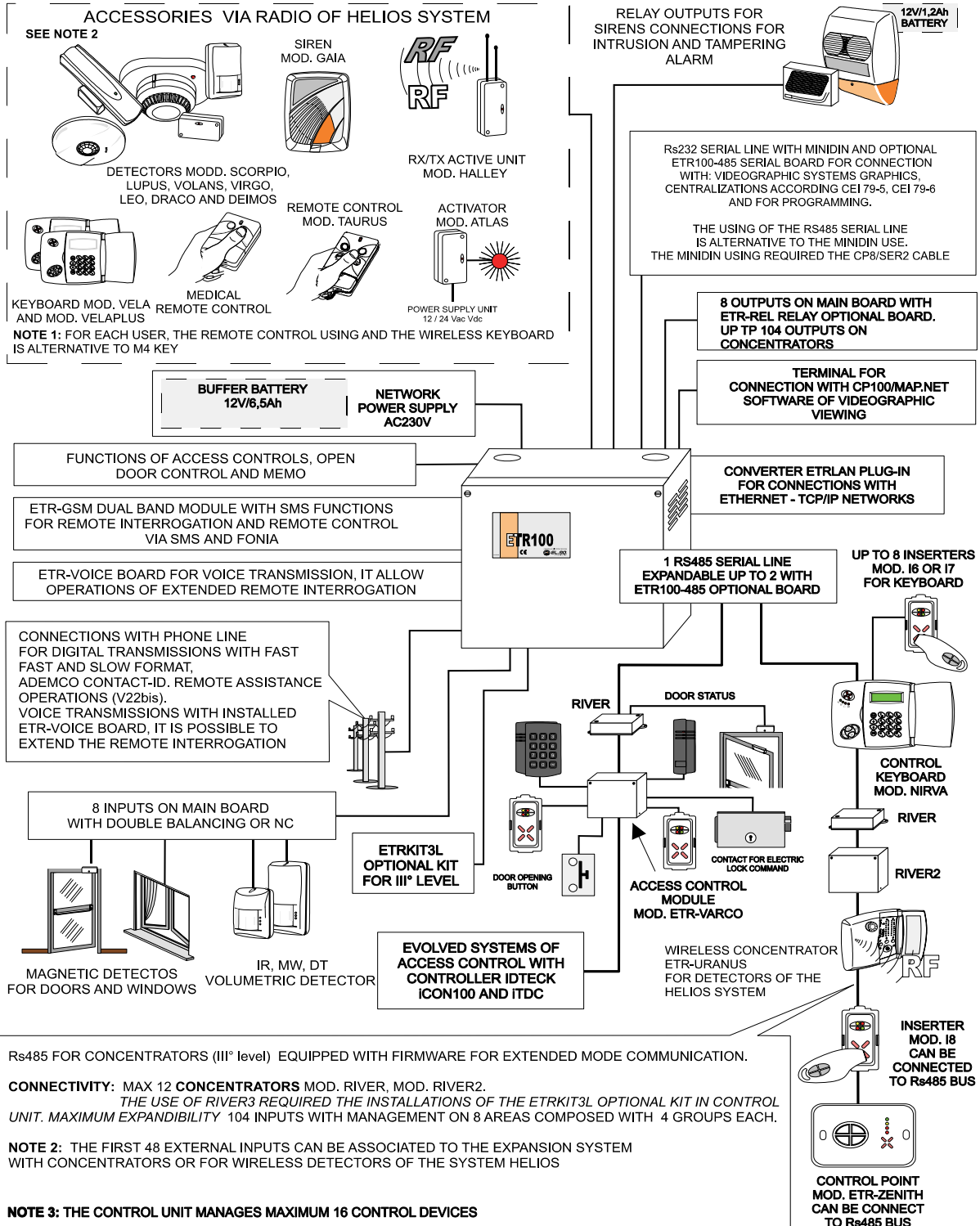
The product complies with current European EMC and LVD directives. The full text of the EU declaration of conformity is available at the following Internet address: elmospa.com – registration is quick and easy.



3. BLOCK DIAGRAM

Example of I8 reader use with ETR100 control unit.

BLOCK DIAGRAM OF A SYSTEM CONTROLLED BY ETR100 CONTROL UNIT



NOTE 4: THE SCHEME NOT INDICATES THE CONNECTION OF AUXILIARY POWER SUPPLY UNIT, FOR EXAMPLE MOD. C11K. INSTALL THEM ON TO POWER THE CONCENTRATORS CONNECTED TO THE RS485 SERIAL LINE AND OTHER DEVICES.

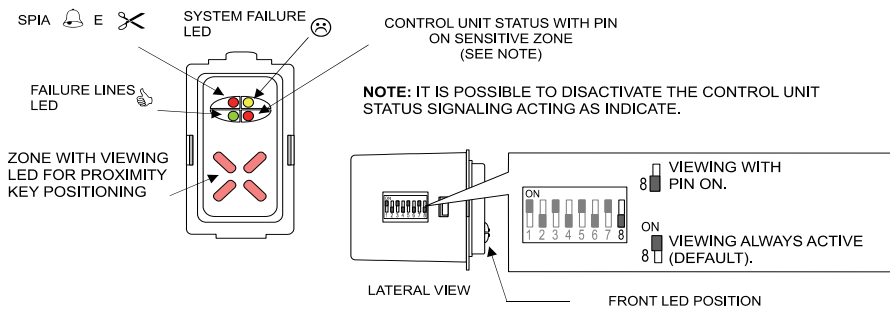
Note: the scheme is just an example.



4. SIGNALS AND CONNECTION

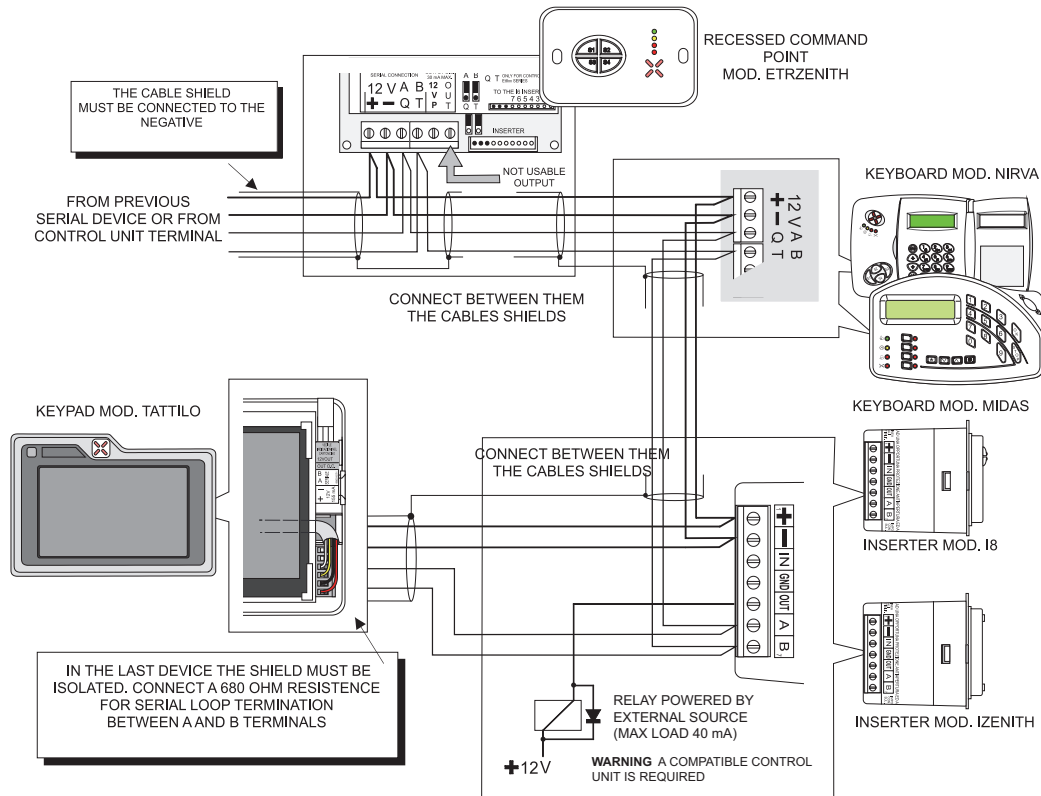
Front view of the reader with position of selector No. 8 to vary status LED operation.

INSERTER I8 - FRONT VIEW



ATTENTION
The reader housing **MUST NOT BE OPEN.** Its opening will void the warranty.

Serial line connections.



Note: a reader placed inside the recessed box must be protected against removal and connection cables tampering with proper tamper protection.

Warnings:

- Do not install two readers in the same plate.
- Do not install a reader in a plate where there is already an IZENIT reader.
- Do not install it near other readers that generate magnetic fields at 125KHz frequencies (e.g. badge readers).
- Use non-conductive plastic material plates; avoid using metal plates or plates composed of another conductive material.
- For Legrand series, the inserter with the adapter must be placed in the central hole of the socket boxes; it is possible to insert other components of the Legrand series in the two lateral holes.
- For outdoor installation use only mod. **I8S** in a weatherproof box with transparent cover.



5. PROGRAMMING TABLE

Sequence of programming selectors and related identification codes.

ATTENTION: due to the small size of the selector, it is essential to operate with a proper tool to prevent damage.

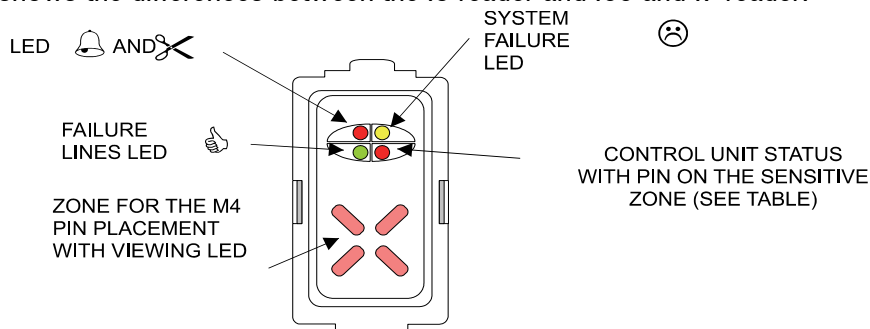
001		002		003		004		005		006	
007		008		009		010		011		012	
013		014		015		016		017		018	
019		020		021		022		023		024	
025		026		027		028		029		030	
031		032		033		034		035		036	
037		038		039		040		041		042	
043		044		045		046		047		048	
049		050		051		052		053		054	
055		056		057		058		059		060	
061		062		063		064		065		066	
067		068		069		070		071		072	
073		074		075		076		077		078	
079		080		081		082		083		084	
085		086		087		088		089		090	
091		092		093		094		095		096	
097		098		099		100		101		102	
103		104		105		106		107		108	
109		110		111		112		113		114	
115		116		117		118		119		120	
121		122		123		124		125		126	
127		128		THE SELECTOR No. 8 IS NOT USED FOR THE ENCODING							


Note: the number to set should not be already in use by another serial device, the maximum number of readers that can be connected depends on the characteristics of the control unit in use.



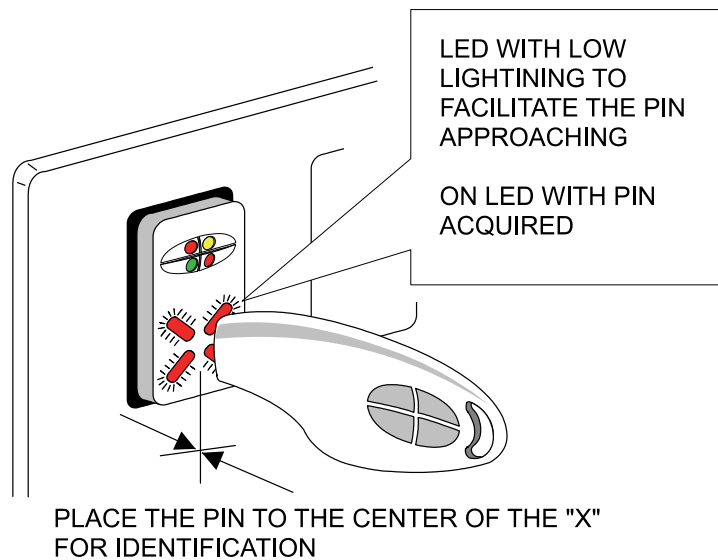
6. VIEWS

The figure below shows the differences between the I8 reader and I66 and I7 reader.



I8	I66 - I7
<p>IT IS POSSIBLE TO MAINTAIN ACTIVE THE CONTROL UNIT STATUS SIGNALING ACTING ON THE SELECTOR No. 8.</p>	<p>TO MAINTAIN ACTIVE THE CONTROL UNIT STATUS SIGNALING IS NECESSARY TO INVERT THE 3 AND 4 TERMINALS CONNECTIONS TO OBTAIN THE FOLLOWING SIGNALINGS.</p> <p>CONTROL UNIT STATUS ALWAYS ACTIVE</p>  <p>LED with bell and scissors icon ONLY WITH PIN ON THE SENSITIVE ZONE</p>

M4 key placement.



INSERTER

Addressable readers for PROXI key mod. I8 and I8B - TECHNICAL MANUAL
November 2020 Edition

090010307

Products features as described above do not bind the manufacturer and may be modified without prior notice.

EL.MO. SpA Via Pontarola, 70 - 35011 Campodarsego (PD) - Italy

Tel. +390499203333 - Fax +390499200306 - Help desk +390499200426 - www.elmospa.com - international@elmospa.com