

SIRIUS

IPR-I80-SPC

Spacer for Sirius i80 card reader

DESCRIPTION

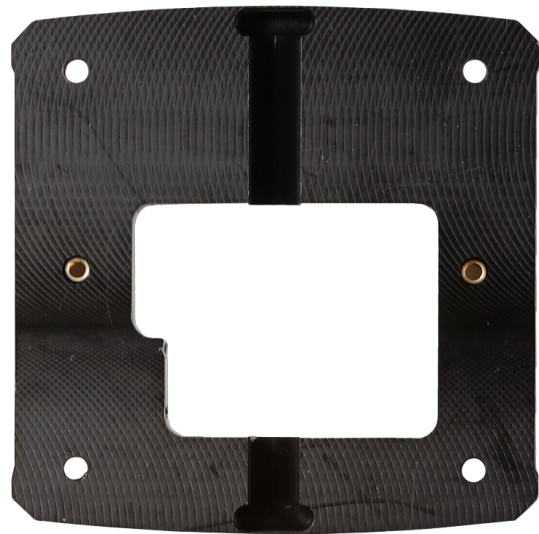
The Sirius i80(p) Spacer is the standard Spacer for the Sirius i80. This is often used on door posts where cable entry from the rear is not possible, or where additional space must be created from a metal door post. The Spacer is equipped with a made-to-measure profile which always enables a streamlined and precise installation of the card reader.

FEATURES

Installation on metal surfaces

Temperature range -40 °C to +90 °C

Easy to install



RELATED



Sirius IPR-I80-MDF
Sirius i80



Sirius IPR-I80P-MDF
Sirius i80p card reader pin pad MIFARE/DESFire
