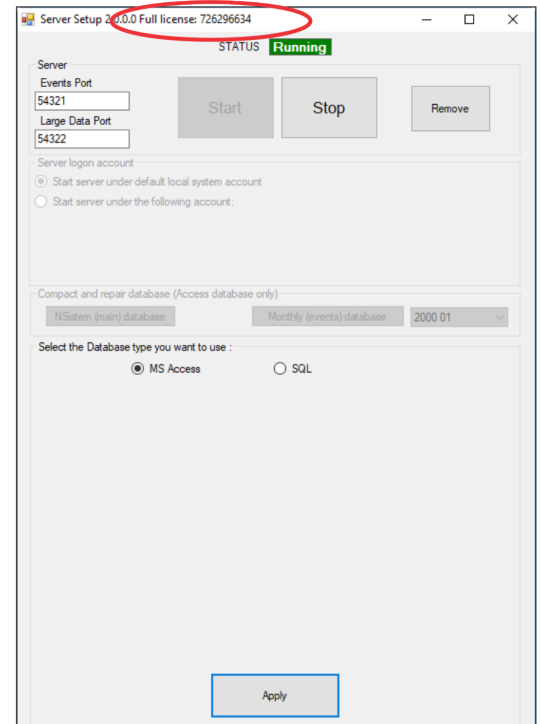
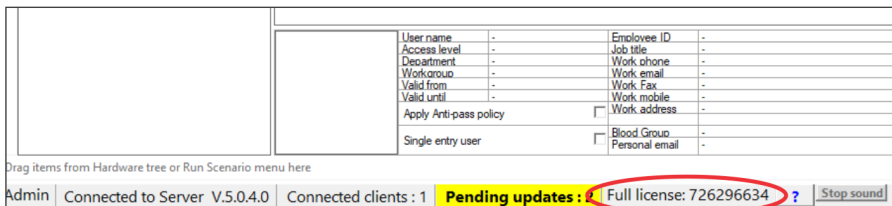




INSTALLER'S MANUAL

Starting from version 5.x.x, the USB Dongle is used for licensing of PROS CS Software.

- Insert the USB dongle in the Server PC and the software will automatically recognize it.
- You will get notification that the software is licensed in both PROS CS client and server as depicted in the pictures below.



There are two licensing levels:

- 1. Free license:** applied by default when downloading the software, without having to use any USB license key
- 2. Full license:** applied when the USB license key is inserted in the Server PC

FREE AND FULL LICENSE FEATURE CHART

Feature	Free	Full
Client access from remote PC (Previous versions require USB license key at Client PC)	✓	✓
MS Access database	✓	✓
SQL database	✗	✓
Users Shadow table	✗	✓
Global Anti Passback	✗	✓
Maps	✓	✓
Video systems integration	✓	✓
Customizable toolbars	✓	✓
Access levels	✓	✓
Access reports	✓	✓
System reports	✓	✓
Function cards	✓	✓
Attendance reports	✗	✓
Automatic evacuation reports	✓	✓
Muster report	✓	✓
Find user option	✓	✓
Web report server	✗	✓
Scheduled tasks	✗	✓
Scenarios	✗	✓
Card printing	✗	✓
Global fire	✗	✓
Lift control	✗	✓
Client SDK	✓	✓
Sites	Unlimited	Unlimited
Operators	Unlimited	Unlimited
Number of Servers defined in the Client	Unlimited	Unlimited
Custom Wiegand configurations	✓	✓
Finger template in Mifare cards	✓	✓
Import/Export Users to Excel	✓	✓