

# WM27JB

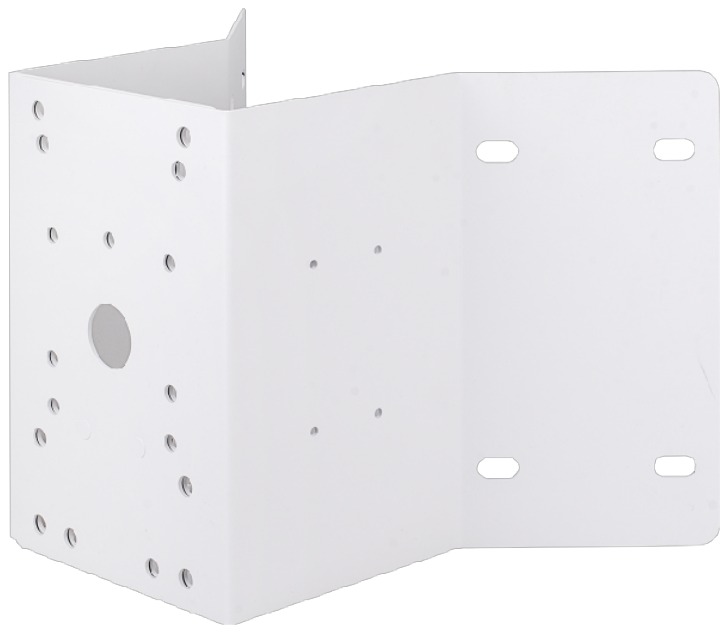
Corner mount, for JB27

## DESCRIPTION

The WM27JB is a corner mount for the JB27 junction box.

## FEATURES

SPCC

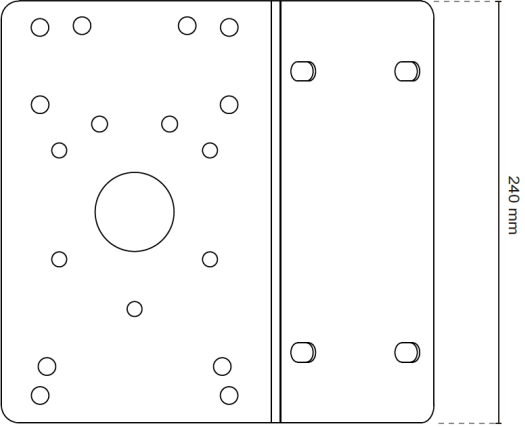
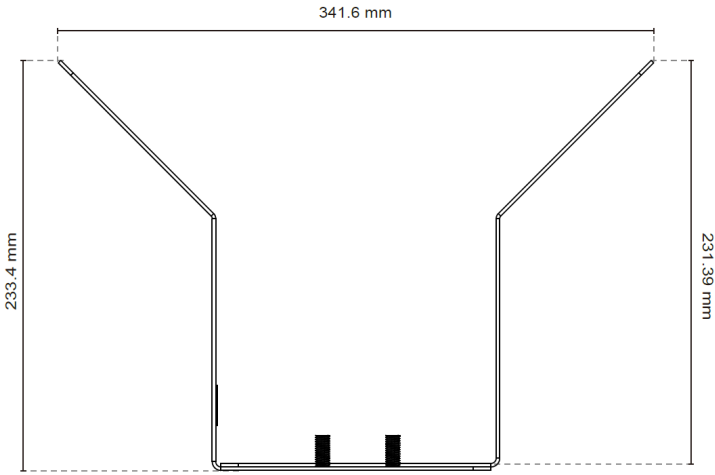


**Mechanical**

|                        |                        |
|------------------------|------------------------|
| Materials              | SPCC                   |
| Dimensions (L x W x H) | 240 x 341.6 x 233.4 mm |
| Color                  | White                  |
| Max. Load              | 25 kg                  |
| Weight                 | 3.13 kg                |

**Ordering Information**

|        |                               |
|--------|-------------------------------|
| WM27JB | Corner mount, for JB27        |
| JB27   | Junction box, for WM01A, WM27 |
| WM27   | Wall mount, for PD9x0         |
| PM27JB | Pole mount, for JB27          |



## RELATED

---



**TKH Security JB27**  
Junction box, for WM01A, WM27

---



**TKH Security PM27JB**  
Pole mount, for JB27

---



**TKH Security WM27**  
Wall mount, for PD9x0

---