



EL/6F

Indoor piezoelectric siren for intrusion detection systems, with LED strobe



Recipient of the instructions:  User |  Installer

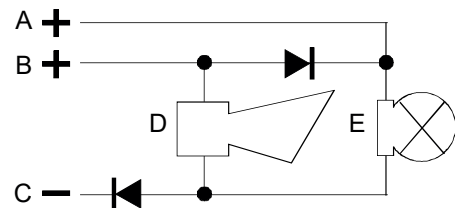
1. GENERALS

The EL/6F indoor siren features a good-looking plastic housing, high acoustic power and an high efficiency piezo sounder. Its strobe light can also be controlled separately from the siren.

2. TECHNICAL DATA

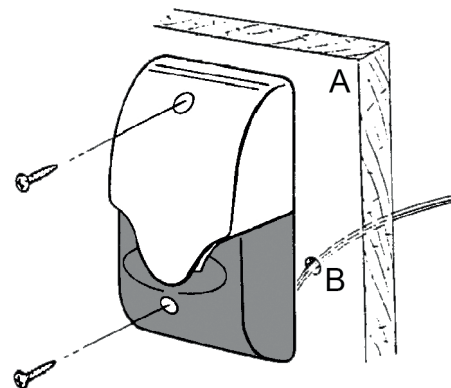
Model	Unit	EL/6F
DC power supply	V	12 (10÷14)
Current draw @ 12 V	mA	280
Sound pressure @ 12 V	dB	100
Protections		Against polarity inversion
Connections		3-wire cable, 30 cm long
Functions		Separate activation of the siren and of the strobe
Dimensions	mm	W 73, H 122, D 46
Weight	g	110
Parts supplied		2 fixing screws

3. WIRING



- A Strobe only positive (white).
- B Strobe and siren positive (red).
- C Common (brown).
- D Siren.
- E Strobe.

4. MOUNTING



- A Wall.
- B Hole.

EU DECLARATION OF CONFORMITY

The product complies with current European EMC and LVD directives.

The full text of the EU declaration of conformity is available at the following Internet address:
www.elmospa.com — registration is quick and easy.



GENERAL WARNINGS



This device has been designed, built and tested with the utmost care and attention, adopting test and inspection procedures in compliance with current legislation.

Full compliance of the working specifications is only achieved in the event the device is used solely for its intended purpose, namely:

Indoor piezoelectric siren for intrusion detection systems, with LED strobe

The device is not intended for any use other than the above and hence its correct functioning in such cases cannot be assured. Consequently, any use of the manual in your possession for any purpose other than those for which it was compiled - namely for the purpose of explaining the product's technical features and operating procedures - is strictly prohibited.

Production processes are closely monitored in order to prevent faults and malfunctions. However, the componentry adopted is subject to an extremely modest percentage of faults, which is nonetheless the case with any electronic or mechanical product.

Given the intended use of this item (protection of property and people), we invite you to adapt the level of protection offered by the system to suit the actual situation of risk (allowing for the possibility of impaired system operation due to faults or other problems), while reminding you that there are specific standards for the design and production of systems intended for this kind of application.

We hereby advise you (the system's operator) to see that the system receives regular routine maintenance, at least in accordance with the provisions of current legislation, and also check on as regular a basis as the risk involved requires that the system in question is operating properly, with particular reference to the control unit, sensors, sounders, dialler(s) and any other device connected. You must let the installer know how well the system seems to be operating, based on the results of periodic checks, without delay.

Work involved in the design, installation and maintenance of systems incorporating this product should be performed only by personnel with suitable skills and knowledge required to work safely so as to prevent any accidents. It is vital that systems be installed in accordance with current legislation. The internal parts of certain equipment are connected to the mains and therefore there is a risk of electrocution when maintenance work is performed inside without first disconnecting the primary and emergency power supplies.

Certain products include batteries, rechargeable or otherwise, as an emergency backup power supply. If connected incorrectly, they may cause damage to the product or property, and may endanger the operator (explosion and fire)..

WARNINGS FOR THE INSTALLER



Comply strictly with current standards governing the installation of electrical systems and security systems, and with the manufacturer's directions given in the manuals supplied with the products.

Provide the user with full information on using the system installed and on its limitations, pointing out that there are different levels of security performance that will need to suit the user's requirements within the constraints of the specific applicable standards. See that the user looks through the warnings given herein.

WARNINGS FOR THE USER



Check the system operation thoroughly at regular intervals, making sure that the equipment can be armed and disarmed properly.

Make sure the system receives proper routine maintenance, employing the services of specialist personnel who meet the requirements prescribed by current regulations.

Ask your installer to check that the system suits changing operating conditions (e.g. changes in the extent of the areas to be protected, change in access methods, etc...)

FUNDAMENTAL SAFETY RULES



The use of the device is forbidden for children and unassisted disabled individuals.

Do not touch the device when bare footed, or with wet body parts. Do not directly spray or throw water on the device.

Do not pull, remove or twist the electric cables protruding from the device even if the same is disconnected from the power source.

DISPOSAL WARNINGS



IT08020000001624

In accordance with Directive 2012/19/EU on waste electrical and electronic equipment (WEEE), please be advised that the EEE was placed on the market after 13 August 2005 and must be disposed of separately from normal household waste.