

# ASW367

## Conventional Wall Mount VAD, Multi Tone, Deep Base - Red Flash

### General

---

The ASW367 is a RED, general purpose, wall mount, electronic sounder and beacon for fire alarm applications. It features a special base containing all wiring connections allowing for easy placement or removal of the device. With an EN54-23 approved coverage pattern of W-2.4-7.5 for the beacon, each ASW367 may be mounted up to 2.4m high and cover a square room of 7.5 x 7.5m with a single device.

### Easy and Fast Installation

---

The ASx360 series alarm sounder/beacons allow faster installation and maintenance thanks to an innovative mounting base. Dispensing with the need for locking screws these devices use TimeSaver™ bases from the 630 series detector lines. Heads are simply locked onto the base with a “twist and click” action, allowing fitting or removal at any time because the base is the only component that needs to be wired. As the cabling requirement is reduced, commissioning time and costs are naturally reduced as well.

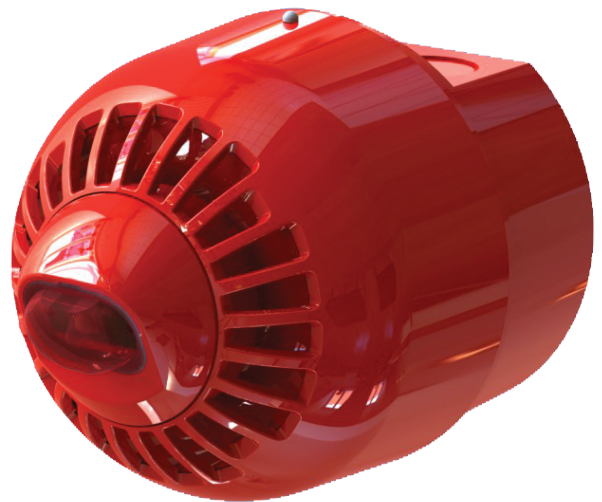
### Efficient and versatile

---

The ASx360 series sounders provide high sound output at a low current, thus reducing power requirements and system cost. They are supplied with a volume control as standard, allowing final audio adjustments to be made during installation. With a choice of 32 different tones (see tones table in manual), which are switch selectable, the required tone can be selected during installation.

The ASx360 series beacons utilise a specially designed lens giving a uniformed light output over the specified coverage area.

The mechanism for locking the device to the base may be activated if required. Once activated, a special tool is required to remove the sounder from the base.



### Details

---

- High sound output with Pulse Alert™ technology
- 32 Tones user selectable
- Automatic synchronisation
- Volume control and adjustable flash rate
- Anti-Tamper locking mechanism
- Deep mouting base with side cable entry and wiring to the base
- Weatherproof
- Seperate sounder and beacon and control
- EN54:3 and EN54:23 approved, CPR Certified

# ASW367

## Conventional Wall Mount VAD, Multi Tone, Deep Base - Red Flash

### Technical specifications

#### General

Compatibility	All conventional notification circuits
Line monitoring	Polarised input

#### Electrical

Power supply type	VDC
Operating voltage	17 to 60 VDC
Current consumption	5.1 mA (sounder) 20 mA @ 0.5 Hz (VAD)
Operation	Continuous

#### Sounder

Output level	85 to 97dB(A) @ 1 m (tone dependant)
Selectable tones	32
Synchronization	Phased start

#### VAD

Colour	Red
Rating	W-2.4-7.5
Floor coverage	56.25 m <sup>2</sup>
Flash frequency	0.5 Hz
Synchronization	Supported

#### Physical

Physical dimensions	97.5 x 117 mm (Ø x D)
Net weight	215 g
Colour	Red
Mounting type	Base mount, Wall mount
Mounting position	Wall
Mounting base	Deep
Material	High impact polycarbonate
Texture	Smooth

#### Environmental

Vandal proof	No
Operating temperature	-25 to +70°C
Relative humidity	5 to 95% noncondensing
Environment	Indoor, Outdoor
IP rating	IP65

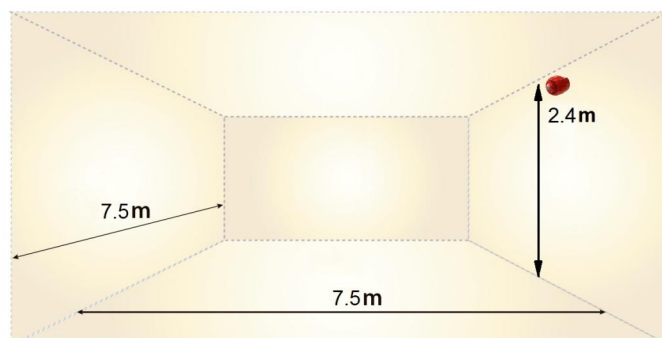
#### Regulatory

Compliance	CE, REACH, RoHS 3, WEEE
Certification	CPR
Standards	EN54-3; EN54-23

#### Compatible products

Category	Reference	Description
Notification device	ASW366	Conventional Wall Mount VAD, Multi Tone, Shallow Base - Red Flash
Notification device	ASW366W	Conventional Wall Mount VAD, Multi Tone, Shallow Base - Red Flash
Notification device	ASW367W	Conventional Wall Mount VAD, Multi Tone, Deep Base - Red Flash

EN54-23 Coverage: W-2.4-7.5



As a company of innovation, Carrier Fire & Security reserves the right to change product specifications without notice. For the latest product specifications, visit [firesecurityproducts.com](https://firesecurityproducts.com) online or contact your sales representative.

Last updated on 13 October 2023 - 12:41