



DOMOTIME SRL

Via Monico 9, 25017 Lonato del Garda (BS) – ITALY -

Tel.: +39 030 9913901

Fax: +39 030 2070611

Email: info@domotime.com

Website: www.domotime.com

Rev. 2019-06

SCHEMA TECNICA PRODOTTO TECHNICAL CARD

Codice prodotto: Product code:	CA123001EV	Cremagliera in acciaio per cancelli scorrevoli Steel rack for sliding gates	
Materiale: Material:	<i>Acciaio galvanizzato S235JR (EN 10027-1)</i> <i>Galvanized steel S235JR (EN 10027-1)</i>	Modulo: Module:	<i>M4</i> <i>M4</i>
Peso: Weight:	<i>2,5 Kg/m</i> <i>2,5 Kg/m</i>	Finitura: Finishing:	<i>Sbavato – Deburred</i> <i>Zincato – Galvanized</i> <i>UNI ISO 2081 Fe/Zn 8</i>
Dimensioni: Dimensions:	<i>12 x 30 x 1005 mm</i> <i>12 x 30 x 1005 mm</i>	Asole di fissaggio: Fixing holes:	<i>3 - Nottolini inclusi (3 set/m)</i> <i>3 - Fixing bolts included (3 sets/m)</i>
Peso max sopportato: Max loading capacity:	<i>2000 kg</i> <i>2000 kg</i>	Imballo: Packaging:	<i>Confezione contenente 4 pezzi</i> <i>Packaging made of 4 pieces</i>

Composizione Chimica % Chemical composition

Materiale Material	C	Si	Mn	S	Ti	P	Cu	Cr	Ni
Standard % Standard %	0,14 – 0,22	≤ 0,30	0,30 – 0,65	≤ 0,050		≤ 0,045			
% Effettiva Actual %	0,14	0,15	0,31	0,005		0,021			

Caratteristiche Meccaniche Mechanical properties

	Carico di rottura Ultimate tensile strength	Carico di snervamento Yield Strength	Allungamento Elongation
	R _m (N/mm ² - MPa)	Re _L (N/mm ² - MPa)	%
Valori standard Standard value	375 – 500	≥ 235	≥ 26
Valori effettivi Actual value	452	291	32

Domotime Srl dichiara che il prodotto CA123001EV è conforme ai requisiti essenziali fissati dalle Direttive Europee.

Domotime Srl declares that the product CA123001EV complies with European directives.



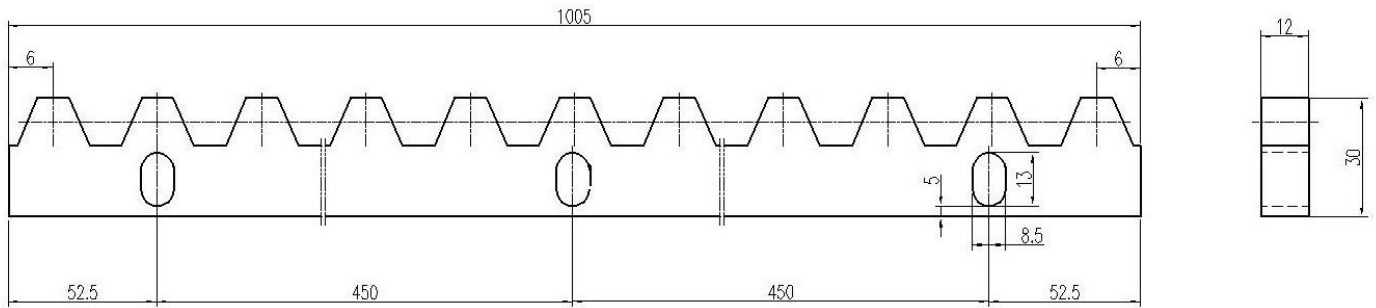


DOMOTIME SRL

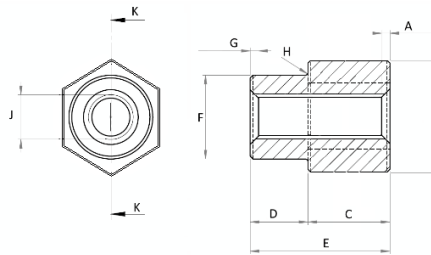
Via Monico 9, 25017 Lonato del Garda (BS) – ITALY -
 Tel.: +39 030 9913901
 Fax: +39 030 2070611
 Email: info@domotime.com
 Website: www.domotime.com

Rev. 2019-06

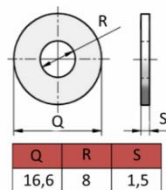
Disegno tecnico Technical drawing



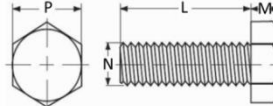
Nottolini inclusi: CAVRNE (3 set/m) Fixing bolts included: CAVRNE (3 sets/m)



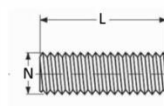
A	B	C	D	E	F	G	H	J	K
1,5x45°	∅20	16	9	25	∅15	1,5x45°	R0,5	M8	∅24



Q	R	S
16,6	8	1,5



L	M	N	P
25	5	7,6	13



L	N
10	7,6