

ELARA™ FC-SERIES ID

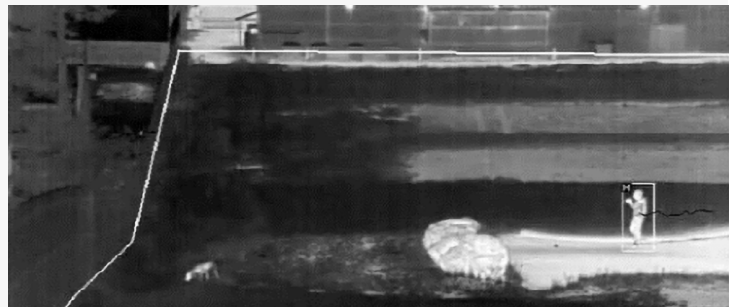
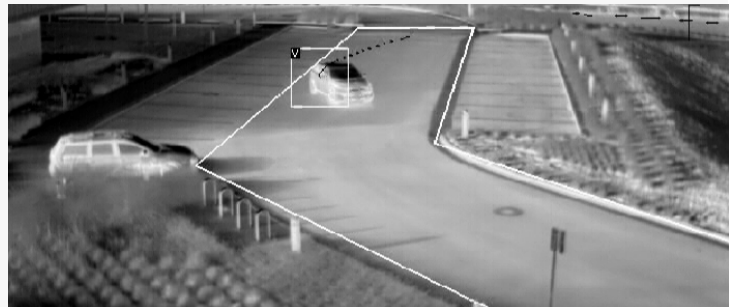
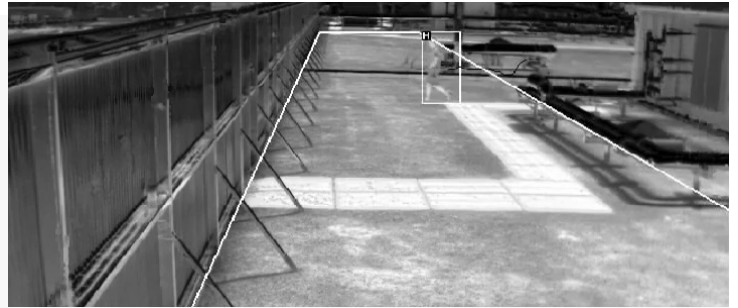
Thermal Analytics Camera



The Elara FC-Series ID combines best-in-class thermal image detail and high-performance edge perimeter analytics in a single device that delivers optimal intrusion detection in challenging environments and extreme conditions.

Elara FC-Series ID cameras feature on-board video analytics optimized for FLIR's thermal sensors. Easy to set up and capable of classifying human or vehicular intrusions,

Elara FC-Series ID cameras provide reliable detection with low false alarm rates, all without human intervention.



RELIABLE ONBOARD ANALYTICS

Accurately classify humans and vehicles

- Auto calibration for depth setup for a simple and reliable configuration.
- No additional measurement tools are needed, requiring only a single installer on site
- Allows analytics in corridor mode, reducing the number of cameras and improving the total cost of ownership
- Target hand-off to PTZ camera auto-tracking

INDUSTRY-LEADING IMAGE QUALITY

Crisp, clean imagery for unmatched video analytics performance and reliability

- Superior image quality in low-contrast conditions
- FLIR's custom AGCs provide images with extremely high contrast
- Dynamic Detail Enhancement (DDE) creates sharp edges and contrast that improve analytics performance

HIGH-PERFORMANCE LENSES

Wide range of lenses for optimal detection ranges in all conditions

- Choose from 17 high-performance lenses suitable for any perimeter or open area, including QVGA from 4° to 69° fields of view and VGA from 8° to 90° fields of view
- High performance optics deliver clear thermal video

SPECIFICATIONS

	Elara FC 3xx ID-Series	Elara FC 6xx ID-Series	Environmental			
Image			IP Rating (Dust & Water Ingress)	IP66 & IP67		
Array Format (NTSC)	320 × 240	640 × 480	Operating Temperature Range	-50°C to 70°C/-58°F to 158°F (Continuous Operation) -40°C to 70°C /-40°F to 158°F (Cold Start)		
Detector Type	Long-Life, Uncooled VOx Microbolometer		Storage Temperature Range	-50°C to 85°C/-58°F to 185°F		
Spectral Range	7.5 µm to 13.5 µm		Humidity	0-95% relative humidity		
Effective Resolution	76,800 pixels	307,200 pixels	Shock	MIL-STD-810G "Transportation"		
Pixel Pitch	Effective 34 µm (FC-344,332& 369) 17 µm (all other models)	17 µm	Vibe	IEC 60068-2-27		
Thermal Frame Rate	NTSC: 30 Hz - PAL: 25 Hz / 8.3 Hz		Vandalism	IK10 (except windows)		
E-Zoom	4x continuous E-Zoom		De-Icing / Anti-Icing	MIL-STD-810 F, Method 521.2 - 6 mm ice, 120 minutes with POE+, 4 mm ice with POE af FC-304, FC-305, FC-610 & FC-608 with Cold Weather kit		
Focus	Athermalized, focus-free		Warranty & Regulatory			
Sensitivity	<35 mK for F# 1.0 optics		Approvals	CE: EN55032 Class A; FCC 47 CFR Part 15, Subpart B, Class A (within CISPR 22:2008 Class A limits)		
Video			Certifications	IEC 60068-2-1:2007; IEC 60068-2-2:2007; ISTA-1A (Handling)		
Composite Video NTSC or PAL	Hybrid system with IP & analog video, Dynamic NTSC or PAL settings		Compliance	RoHS Directive 2011/65/EU; WEEE 2012/19/EU		
Analog Video Output Composite	1Vp-p (PAL or NTSC), 1 x BNC 75 Ω		Warranty	Camera: 3 Years Sensor: 10 Years		
Video Compression	Two independent channels of H.264 (Restricted VBR and CBR,10kbps-4Mbps, MPEG4, and MJPEG)		Optics			
Streaming Resolution	D1: 720 × 576, 4CIF: 704 × 576, Native: 640 × 512, Q-Native: 320 × 256, CIF: 352 × 288, QCIF: 176 × 144		Model	FOV	F#	Focal Length
Thermal AGC Modes Features	Brightness, Contrast, Sharpness, Grey Shade Compression, Gamma, Smart Screen Balance		FC-369 ID	69° × 56°	F1.4	9 mm
Thermal AGC Region of Interest (ROI)	Default, Presets and User definable to insure optimal image quality on subjects of interest		FC-344 ID	44° × 36°	F1.0	13 mm
Analytics Management	Web-based configuration and management. Masking of analytic detection areas, adjustable sensitivity, automatic responses, remote I/O control		FC-332 ID	32° × 26°	F1.0	19 mm
Analytics Features	Region Entrance/Intrusion Detection, Crossover/Fence Trespassing;		FC-324 ID	24° × 18°	F1.0	13 mm
Image Uniformity Optimization	Automatic Flat Field Correction (FFC); Thermal and Temporal Triggers		FC-317 ID	17° × 13°	F1.0	19 mm
SD Card Snapshot Capture	Support for 32 GB SD Card (sold separately)		FC-313 ID	13° × 10°	F1.1	25 mm
System Integration			FC-309 ID	9.2° × 7.0°	F1.1	35 mm
Ethernet	10/100 Mbps		FC-305 ID	5.4° × 4.1°	F1.25	60 mm
External Analytics Compatible	Yes		FC-304 ID	4.3° × 3.3°	F1.1	75 mm
Control Input/Output	1x Dry Contact In; 1x Relay Out (rated load 0.025 A@ 5VDC)		FC-690 ID	90° × 69°	F1.2	7.5 mm
Network APIs	FLIR SDK, FLIR CGI, ONVIF Profile S		FC-669 ID	69° × 56°	F1.4	9 mm
Network			FC-644 ID	44° × 36°	F1.0	13 mm
Supported Protocols	IPv4, HTTP, Bonjour, UPnP, DNS, NTP, RTCP, TCP, UDP, ICMP, IGMP, DHCP, ARP, FTP, RTP/RTSP, Unicast/Multicast, TCP/IP, HTTP, IEEE 802.1X, SNMP		FC-632 ID	32° × 26°	F1.0	19 mm
General			FC-625 ID	25° × 20°	F1.1	25 mm
Weight With Sunshield	7.5/9/13/19/25/35 mm 1.8 kg (4 lb) - 60 mm 2.0 kg (4.5 lb) - 75 mm 2.2 kg (4.75 lb)		FC-617 ID	17° × 14°	F1.1	35 mm
Weight Without Sunshield	7.5/9/13/19/25/35 mm 2.2 kg (4.75 lb) - 60 mm 2.4 kg (5.25 lb) - 75 mm 2.5 kg (5.5 lb)		FC-610 ID	10° × 8.2°	F1.25	60 mm
Dimensions (L, W, H)	Without sunshield: 259 × 114 × 106 mm/10.2" × 4.5" × 4.2" With sunshield: 282 × 129 × 115 mm/11.1" × 5.1" × 4.5"		FC-608 ID	8.6° × 6.6°	F1.1	75 mm
Input Voltage	Source	POE (802.3 af)	POE+ (802.3 at)	12 VDC	24 VDC	24 VAC(VA)
	Heater off	<5.5 W	<5.5 W	<5.5 W	<5.5 W	<8 W
	Heater on (@ 100%)	N/A	<25 W	<25 W	<25 W	<32 W
Surge Immunity on AC Power Lines	CE: EN55032 Class A; FCC 47 CFR Part 15, Subpart B, Class A (within CISPR 22:2008 Class A limits)		Specifications are subject to change without notice. For the most up-to-date specs, go to www.teledyneflir.com			
Surge Immunity on Signal Lines	EN 55024: 2010 and 55032: 2010 to 4.0 kV on AC aux power lines; EN 50130-4:2011; IEC 62599-2:2010					
Cyber Security			IEEE 802.1x TLS/HTTPS User Authentication Access Control via Firewall Digest Authentication			

AMERICAS

6769 Hollister Ave.
Goleta, CA 93117

EMEA

Luxemburgstraat 2
2321 Meer
Belgium

APAC

Rm 1613-16, Tower II
Grand Central Plaza
138 Shatin Rural Committee Rd.
Shatin, New Territories
Hong Kong

This product is subject to United States export regulations and may require US authorization prior to export, reexport, or transfer to non-US persons or parties. Diversion contrary to US law is prohibited. For assistance with confirming the Jurisdiction & Classification of Teledyne FLIR, LLC products, please contact exportquestions@flir.com. ©2022 Teledyne FLIR, LLC. All rights reserved.

Revised on 01/31/22
Elara™ FC-Series ID_Datasheet-LTR 20-0858